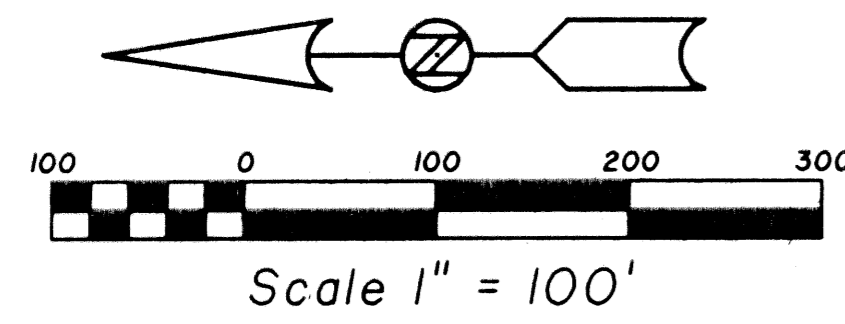
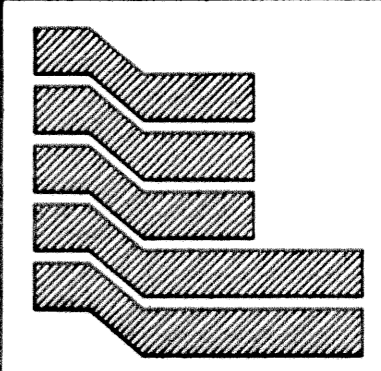
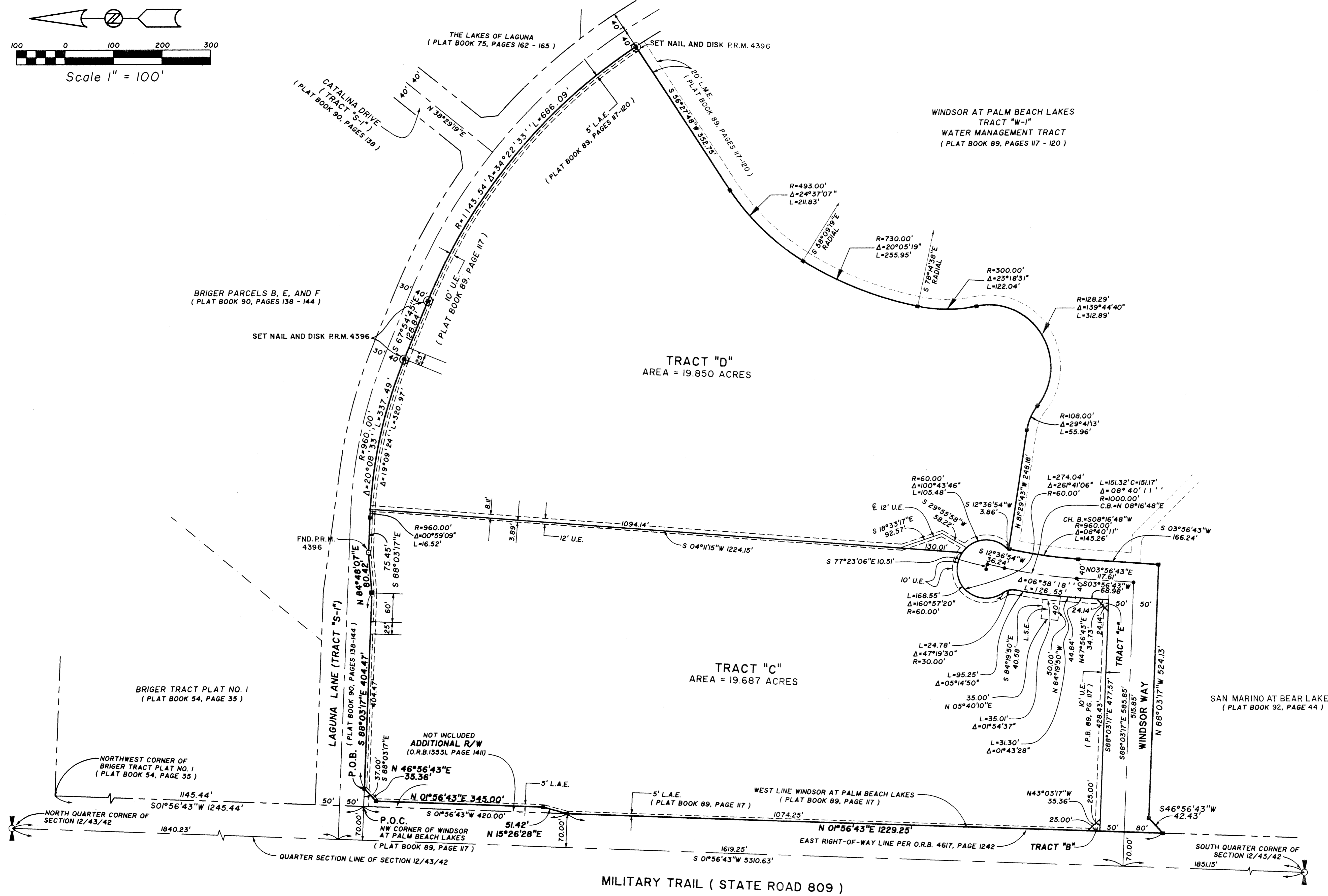


WINDSOR AT PALM BEACH LAKES-PLAT 2

BEING A REPLAT OF TRACTS "B", "C", "D" AND "E" AND WINDSOR WAY, WINDSOR AT PALM BEACH LAKES, AS RECORDED IN PLAT BOOK 89, PAGES 117 THROUGH 120, INCLUSIVE, PUBLIC RECORDS OF PALM BEACH COUNTY, FLORIDA, LYING IN SECTION 12, TOWNSHIP 43 SOUTH, RANGE 42 EAST, CITY OF WEST PALM BEACH, PALM BEACH COUNTY, FLORIDA. SHEET 2 OF 2



STATE OF FLORIDA SS
COUNTY OF PALM BEACH
THIS PLAT WAS FILED FOR RECORD AT _____
M., THIS _____ DAY OF _____ 2002
AND DULY RECORDED IN PLAT BOOK NO. _____
ON PAGE _____
DOROTHY H. WILKEN,
CLERK OF THE CIRCUIT COURT
BY _____ D.C.



Landmark Surveying & Mapping Inc.
L.B. NO. 4396
1850 Forest Hill Boulevard
Ph. (561) 433-5405 Suite 100 W.P.B. Florida

**WINDSOR AT PALM BEACH
LAKES-PLAT 2**

C:\EP\M13\JOBS\2465\CD\PLAT 15 23 41:35 2002 PLOTTED BY L. C. BISHOPP